

Living with Cancer



Being diagnosed with cancer is likely to cause lots of worries and fears not just for yourself but also for your loved ones. It's scary, and you may be having all sorts of thoughts, including which treatment will I need, will I die, how will I look after my family, will I be able to work, how will I pay the bills, or you may just feel dumb and not be able to think of anything. Everyone is different. You may feel out of control and experiencing high levels of pain.

When going through cancer treatment, it's not just your body which is affected; it will also put a strain on your mental health. Having lengthy and intensive treatment can dominate your own and your families lives. Worrying about the future, having to attend many hospital appointments, and maybe undergoing operations, not knowing how you're going to feel each day, and even telling people that you're going through treatment, can make some people very anxious.

According to **Macmillan Cancer Support**, 20% of people living with cancer are affected by depression, and 10% are affected by anxiety.

Feeling anxious is an understandable response to the trauma you're going through. The symptoms of which vary and may include an accelerated heart rate, trembling, nausea, muscle tension, inability to relax and insomnia.

When it comes to recovery, thinking about your mental health is as important as getting well physically. So, don't ignore your worries and make time to talk them through. Ensure you have a good support network of loved ones around you, as this is beneficial to your overall mood and progress. It's also important to seek support from your GP or healthcare professional if you need it. Some cancer survivors develop **PTSD**, which will require specialist treatment.

Having cancer can be very hard to cope with. When you are trying to cope with an illness there is no right or wrong way to feel. Everyone is different and you will deal with things in your own way. Cancer Research UK have produced information [here](#) on how to cope emotionally with your illness.

Dealing with a cancer diagnosis can be tough at the best of times, but even more so in the current climate.

Self-care

Your recovery is about you, so you should make yourself the priority. Keeping up a good, but gentle health regime will help. Making sure you're getting the right nutrition, getting a good night's sleep and doing the things you enjoy in between treatment sessions is vital and can really make a difference.

You may struggle to do exercise but getting outside in nature and going for a short walk each day, can help reduce your anxiety levels and boost your mood.

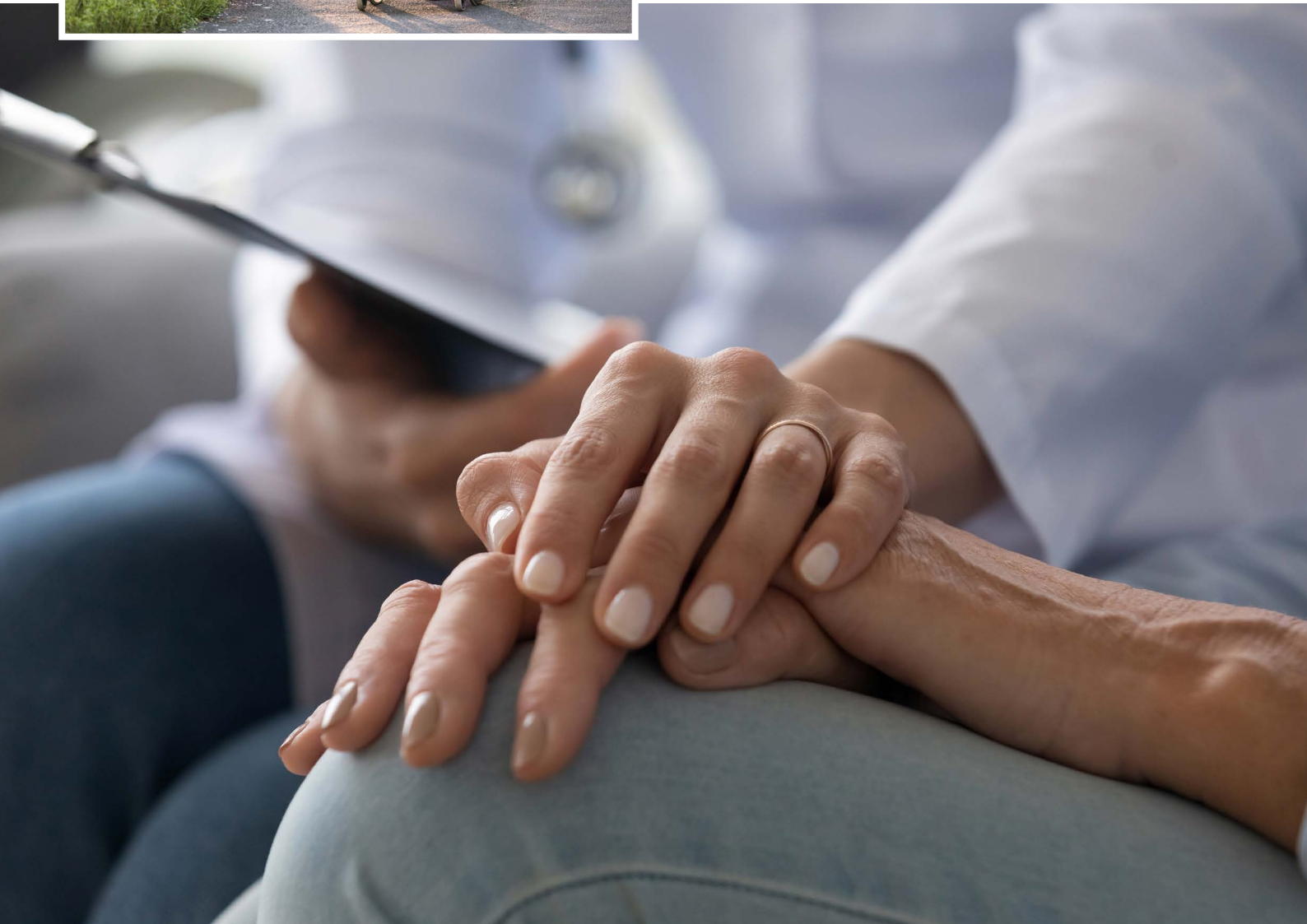


Feeling sick and tired after treatments is very common, so it can be hard to maintain a varied diet. Foods like soups, or easy to eat and digest foods like bananas are a good option. It's vital to keep your body hydrated with water, which may help combat any feelings of nausea or fatigue.

Where you can it's important to live as normal life as you can whilst going through treatment.

Of course, cancer recovery is not necessarily straightforward. There will be dark, painful and sad days, but worst of all, there will be scary days. The main thing to remember is to use the support available to help get you through, and to make yourself the priority.

For more information on managing cancer symptoms and possible side effects from treatment, including pain, sickness, and diet problems. Cancer Research UK have produced a 'Coping Physically with Cancer' guide, click [here](#) to read.





Where to get help

NHS

Cancer research UK

Macmillan Cancer Support

Marie Curie

Supporting a loved one living with cancer

When someone close to you is diagnosed with cancer it may feel overwhelming and you may struggle to know how you can help and support them. Explain this to them and ask them how you can best support them.

Regularly reach out to them, send them text messages, give them a call, meet them for a coffee or dinner. Remember even though they are going through treatment, they are still the same person.

If you are a close family member and can be physically present to support them, offer lifts to appointments or even to attend appointments together if allowed. Offer to sit in on telephone appointments or help them to organise their treatment schedule.

If you have the time to offer practical support, this is still possible during the pandemic. For example, offer to do the food shopping, the ironing or walk the dog.

While someone suffering from a long-term illness may not want to be overcome with bunches of flowers, there are lots of other gifts you can send that may help to brighten their day or give them the boost they need. These could be items to help them sleep like pillow sprays, body creams or nutritious food items or a nice treat, like chocolate.

If you are part of a wider family or group of friends, it may be worth arranging who will do what, so as not to overload your loved one but to ensure they receive regular contact from you all.

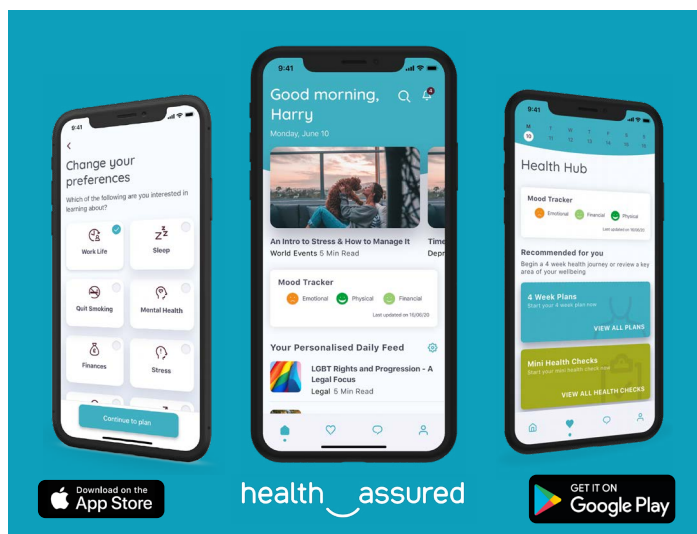
Our **Care Line** Service provided by Health Assured can offer advice and information, helping with a range of concerns including physical or mental health issues, coping with bereavement and legal concerns. Take a look at the e-portal or download the APP.

Health & Wellbeing e-portal:

<https://healthassuredeap.co.uk>

Username: policemutual

Password: careline



Download the Health Assured App and register today - your code is [MHA107477](#)

Police Mutual offer a range of wellbeing support services, for more details check out the wellbeing pages on our website: www.policemutual.co.uk

Police Mutual is a trading style of The Royal London Mutual Insurance Society Limited. The Royal London Mutual Insurance Society Limited is authorised by the Prudential Regulation Authority and regulated by the Financial Conduct Authority and the Prudential Regulation Authority. The firm is on the Financial Services Register, registration number 117672. Registered in England and Wales number 99064. Registered office: 55 Gracechurch Street, London, EC3V 0RL. For your security all calls are recorded and may be monitored.

Visit policemutual.co.uk



Police Mutual